



ALMA MATER STUDIORUM
UNIVERSITÀ DI BOLOGNA

Incontro informativo Idoneità linguistica Inglese A2, B1, B2

26/11/2020

30/11/2020

Centro Linguistico di Ateneo – CLA

**Dott. Francesco Maria Paiardini, Dott.ssa Chiara Carlini,
Dott.ssa Giulia Messeri - Staff Tutoraggio Laboratori Linguistici**

STRUTTURA PROVA INGLESE A2

Prevede **una** parte **lessico-grammaticale** e una parte di **comprensione del testo** (non è prevista la comprensione orale).

La sezione lessico-grammaticale consiste in:

- **24** item grammaticali e lessicali a scelta multipla (4 opzioni)
- **3** item a scelta multipla di linguaggio funzionale (4 opzioni)

L'esercizio di lettura consiste in:

- **un** brano espositivo con 5 domande a scelta multipla
(Tempo di svolgimento: **30** minuti)

<http://www.cla.unibo.it/idoneita-linguistica/struttura-e-modalita-delle-prove-di-idoneita/inglese>

IDONEO: **60%** di risposte esatte

NOTA BENE: NON si può tornare indietro!

Dott. Francesco Maria Paiardini



PRIMA PARTE: conoscenza lessico-grammaticale

24 item grammaticali e lessicali a scelta multipla (4 opzioni)

Domanda **1**
Risposta non ancora data
Punteggio max.: 1
Contrassegna domanda

A: Your flat's really nice. How much is the _____?
B: I pay £200 a week.

Scegli un'alternativa:

- a. cost
- b. money
- c. rent
- d. value

Pagina successiva

NAVIGAZIONE QUIZ

1	2	3	4	5	6
7	8	9	10	11	12
13	14	15	16	17	18
19	20	21	22	23	24
25	26	27	28		

[Termina il tentativo...](#)

Tempo rimasto **0:29:50**

Dott. Francesco Maria Paiardini



Domanda **1**

Risposta non ancora data

Punteggio max: 1



Contrassegna domanda

A: Your flat's really nice. How much is the _____?

B: I pay £200 a week.

Scegli un'alternativa:

- a. cost
- b. money
- c. rent
- d. value

NAVIGAZIONE QUIZ

1	2	3	4	5	6
7	8	9	10	11	12
13	14	15	16	17	18
19	20	21	22	23	24
25	26	27	28		

[Termina il tentativo...](#)

Tempo rimasto **0:29:50**

Per passare alla domanda successiva

Pagina successiva

Dott. Francesco Maria Paiardini



PRIMA PARTE: conoscenza lessico-grammaticale

- Domande dalla **1** alla **24**

STRATEGIE:

- Controllare sempre il soggetto e il tempo verbale (attraverso gli avverbi di tempo *today, tomorrow, yesterday...*);
- Controllare se sono domande o risposte, frasi affermative o negative;
- Controllare gli ausiliari (*be, have, do, does, did...*)

- Passare su questa parte non più di 12/15 minuti!

Dott. Francesco Maria Paiardini



PRIMA PARTE: linguaggio funzionale

3 item a scelta multipla di linguaggio funzionale (4 opzioni)

Domanda **25**
Risposta non ancora data
Punteggio max.: 2,00
Contrassegna domanda

Read the dialogue. What does the man say next?

Man: I'm going to the supermarket. Do you need anything?
Woman: There isn't any milk. Can you get some?

Scegli un'alternativa:

- a. Man: Yes, here you are.
- b. Man: Yes, of course. How much?
- c. Man: Would you like some milk?
- d. Man: No, I don't. Sorry.

[Pagina successiva](#)

NAVIGAZIONE QUIZ

1	2	3	4	5	6
7	8	9	10	11	12
13	14	15	16	17	18
19	20	21	22	23	24
25	26	27	28		

[Termina il tentativo...](#)

Tempo rimasto **0:09:46**

Dott. Francesco Maria Paiardini



PRIMA PARTE: linguaggio funzionale

Domanda **25**
Risposta non ancora data
Punteggio max.: 2,00
Contrassegna domanda

Read the dialogue. What does the man say next?

Man: I'm going to the supermarket. Do you need anything?
Woman: There isn't any milk. Can you get some?

Scegli un'alternativa:

- a. Man: Yes, here you are.
- b. Man: Yes, of course. How much?
- c. Man: Would you like some milk?
- d. Man: No, I don't. Sorry.

Pagina successiva

NAVIGAZIONE QUIZ

1	2	3	4	5	6
7	8	9	10	11	12
13	14	15	16	17	18
19	20	21	22	23	24
25	26	27	28		

Termina il tentativo...

Tempo rimasto **0:09:46**

Controllare il tempo!

Dott. Francesco Maria Paiardini



PRIMA PARTE: linguaggio funzionale

- Domande **25, 26, 27**

STRATEGIE:

- Leggere attentamente il breve dialogo;
 - Capirne il contesto;
 - Controllare le parole presenti (verbi, nomi...).
-
- Passare non più di 4/5 minuti in questa parte!

Dott. Francesco Maria Paiardini



SECONDA PARTE: READING COMPREHENSION

Domanda **28**

Risposta non ancora data

Punteggio max.: 10,00

Contrassegna domanda

The Welcome Collection library

Our library has one of the best health, medicine and medical history collections in the world. There's material on everything you'd expect – from allergies to war surgery. But you'll also find books on alchemy, vampires and much more.

Anyone can join the library. You don't need to be a student, academic or researcher. To join as a day visitor just complete a form at the Library desk when you arrive. Most of our collection is on the open shelves for you to browse. We offer free wi-fi and charging points, as well as lots of desk space.

If you would like to order materials from our collection in advance you should sign up as a member. Memberships last for five years and also enable you to use our library computers, book study rooms, and access some online materials at home.

If you're studying for an Extended Project Qualification (EPQ), you can apply for a two-month membership to access collections that will help with your course. Bring a referral letter from your college, plus photo ID and proof of address to sign up.

As you'd expect, you can't eat or drink or bring in animals – except for assistance animals. We have a limited number of **lockers** available on level 2 where you can put your bags and snacks.

In the first paragraph we learn that the library...

- Only has books about medical history.
- Has one of the oldest collections in the world.
- Has more books on vampires than on alchemy.
- Has books on subjects connected with health.

What can all library users do?

- Use library computers.
- Borrow books from the library.
- Order books in advance.
- Charge their mobile phones.

We understand that...

- you must be enrolled at a university or college to use the library.
- you need a five-year membership card to use the library.
- anyone can access the library without registering.
- some students can have special short-term membership.

NAVIGAZIONE QUIZ

1	2	3	4	5	6
7	8	9	10	11	12
13	14	15	16	17	18
19	20	21	22	23	24
25	26	27	28		

[Termina il tentativo...](#)

Tempo rimasto **0:07:45**

Dott. Francesco Maria Paiardini



SECONDA PARTE: READING COMPREHENSION

- Domanda **28**

STRATEGIE:

- Leggere il titolo per capire il contesto/ambito;
- Non perdere tempo a tradurre tutto;
- Ricercare le parole chiave o più ricorrenti;
- Cercare perifrasi, sinonimi, parafrasi o espressioni simili alle parole nelle domande;

- Tempo ottimale: 8/10 minuti.

Dott. Francesco Maria Paiardini



Metodi alternativi

METODO 1

Leggere il testo e rispondere alle domande.

Vantaggi:

- risposte più precise;
- comprensione del testo più dettagliata;

Svantaggi:

- prende più tempo;
- rischio di voler tradurre ciò che non è necessario.

METODO 2

Leggere le domande e ricercare le risposte nel testo.

Vantaggi:

- più veloce e diretto (soprattutto se si è a corto di tempo);
- comprensione del testo più rapida;

Svantaggi:

- minore precisione;
- comprensione più frammentata.

Dott. Francesco Maria Paiardini



Alla fine....

21	Risposta non ancora data
22	Risposta non ancora data
23	Risposta non ancora data
24	Risposta salvata
25	Risposta salvata
26	Risposta salvata
27	Risposta non ancora data
28	Risposta incompleta

Torna al tentativo

Tempo rimasto **0:13:32**

Questo tentativo deve essere inviato entro

Invia tutto e termina

Per terminare la prova e inviare le risposte

Dott. Francesco Maria Paiardini



Alla fine....

21	Risposta non ancora data
22	Risposta non ancora data
23	Risposta non ancora data
24	Risposta salvata
25	Risposta salvata
26	Risposta salvata
27	Risposta non ancora data
28	Risposta incompleta

Potete modificare solo l'ultima domanda

Torna al tentativo

Tempo rimasto **0:13:32**

Questo tentativo deve essere inviato entro

Invia tutto e termina

Dott. Francesco Maria Paiardini



PRACTICE

<https://elt.oup.com/student/englishfile/preint3/?cc=it&selLanguage=it> (pre-intermediate)

<https://elt.oup.com/student/englishfile/preint3/grammar/?cc=it&selLanguage=it>

<https://elt.oup.com/student/englishfile/preint3/vocabulary/?cc=it&selLanguage=it>

https://www.english-grammar.at/online_exercises/vocabulary-multiple-choice-cloze/vocabulary-mc-index.htm (elementary-intermediate)

https://www.examenglish.com/KET/KET_grammar.htm

https://www.esleschool.com/a2-flyers-cambridge-english-yle-flyers/#tabs_desc_30083_2 (vocabulary e grammar)

Dott. Francesco Maria Paiardini





ALMA MATER STUDIORUM
UNIVERSITÀ DI BOLOGNA

CONTATTI

Centro Linguistico di Ateneo - CLA
Staff Tutoraggio Laboratori Linguistici

Via Filippo Re, 10 – 40124 Bologna

<http://www.cla.unibo.it/>

Autoapprendimento assistito da Tutor:

<http://www.cla.unibo.it/corsi/moduli-preparazione-prova-idoneita/bologna>

email: cla.bo-tutoraggio@unibo.it

STRUTTURA PROVA INGLESE B1

Prevede una parte di **Use of English** e una parte di **comprensione del testo** (*Reading Comprehension*). Non è prevista la comprensione orale.

La sezione di **Use of English** consiste in:

- 10 item grammaticali a scelta multipla
- 6 item lessicali a scelta multipla con 4 opzioni contestualizzati in 3 brevi brani
- un esercizio di *open cloze* con 8 item grammaticali contestualizzati in un brano

La sezione di **comprensione del testo** consiste in:

- un esercizio di *multiple matching* composto da 5 brani brevi con 10 domande

Tempo di svolgimento: **35 minuti** N.B. Non si può tornare indietro!

La prova si intende superata con il **60%** di risposte corrette.

<http://www.cla.unibo.it/idoneita-linguistica/struttura-e-modalita-delle-prove-di-idoneita/idoneita-inglese>

Dott.ssa Chiara Carlini



USE OF ENGLISH – Part 1

- 10 item grammaticali a scelta multipla (4 opzioni)

I love animals but I haven't got any pets. If I had a flat with a garden _____ a dog, but my present flat is much too small.

Scegli un'alternativa:

- a. I can own
- b. I'd definitely get
- c. I really would
- d. I'll like to have

Dott.ssa Chiara Carlini



USE OF ENGLISH – Part 2

- 6 item lessicali a scelta multipla (4 opzioni) contestualizzati in 3 brevi brani

Choose the correct answer for each gap to complete the text

With an education in the of science or technology you can have a career that problems, develop new ideas and carry out original in many different areas of study.

field
tool
field
neighbour
camp

Dott.ssa Chiara Carlini



USE OF ENGLISH – Part 3

- un esercizio di *open cloze* con 8 item grammaticali contestualizzati in un brano

Write ONE WORD in each gap to complete the text.

Marathons

Marathons are long-distance races [] can be

completed by running, or by running and walking. []

are also participants who race in wheelchairs.

Most of the runners in the over 800 marathons held

[] year across the world are amateurs, and the

largest events, like [] ones in New York or London,

can have tens of thousands of participants.

The marathon was one of the original events when the modern Olympics

started [] 1896, but the official distance of 42.195

kilometres [] not established until 1921.

The 2020 London marathon was a virtual event, involving 45,000

participants competing all [] the world and

collecting £16 million for charity. The world's best marathon runners were

invited to take part in an elite race in London [] the

same time. The elite race was won by an Ethiopian, Shura Kitata.

Dott.ssa Chiara Carlini



READING COMPREHENSION

- un esercizio di *multiple matching* composto da 5 brani brevi con 10 domande

You are going to read 5 short texts about local museums. Answer the questions by choosing which text (A, B, C, D, or E) contains the information requested.

N.B. The same text may be chosen several times.

Title: Local Museums

A

This museum is the largest in the city, with important collections in areas such as zoology, anthropology, fine art, local and overseas archaeology, and geology, as well as a fascinating collection of stuffed animals, birds and insects from all over the world. The building was constructed specially for the museum in 1868 but has been extended and modernised several times since then; most recently, it was re-opened in 2011 after a redevelopment lasting four years and costing £24M. Opening hours are 10am to 5pm, Tuesday to Sunday.

B

Visit us and learn about 'life inside' one of the world's most famous and notorious working jails. Our museum attracts more than 35,000 visitors every year from all over the world. Some of the artefacts and documents on display will surprise you but will certainly help you form an opinion about prison life. Vividly portrayed are more than 200 years of this prison's exciting history, from the beginning, when it was a Prisoner of War Depot for French and American prisoners of war, through to the prison of today. Discover how some famous prisoners escaped! Opening times may change depending on staff availability.

C

D

Established in 1196, The Abbey was converted into a museum of history and art some years ago and now this Ancient Monument, with its beautiful and award-winning gardens, provides a family-friendly centre for creativity and culture – with a seasonal programme of exhibitions and visual arts events as well as crafts and history workshops. As a key cultural hub, the Abbey is where high profile exhibitions are shown side by side with creative work from local emerging talent. Adult membership with unlimited visits is offered from just £18 a year.

E

The Cinema Museum is home to one of the largest collections of material relating to the moving image in Britain. It all started with one of the British cinema's most innovative directors. As well as making films, he assembled a remarkable collection of over 50,000 items, which was given to the University to found the museum and forms the heart of our collection. We are both a public museum and an academic research facility. Over 1,000 objects are on display in our Galleries, which can be viewed by the public 7 days a week.

Which museum ...

is decorated in a particular historical style?

contains a lot of objects collected by one person?

building was designed specifically as a museum?

tells the stories of the people who spent time there?

has had major restoration work done recently?

offers an annual subscription for people who want to go regularly?

Dott.ssa Chiara Carlini



MULTIPLE CHOICE

SOME TIPS

Try to **exclude** some of the choices. Options may seem to have similar meanings, but there is always a grammatical reason which lets you choose the one which fits the gap.

E.g. A Finnish scientist went to Vienna for a.....on human genetics

A) work; B) article; C) conference; D) news

B is not possible because article requires “an” before it; D neither because is an uncountable noun; A is more used as a verb, so we would rather choose C.

Dott.ssa Chiara Carlini



MULTIPLE CHOICE and OPEN CLOZE

SOME TIPS

- Check what the box has on its **left** and its **right**: e.g. *plural/singular nouns, adverbs, commas...*
- **Look out for tenses**: *are you in the past, in the present or in the future?*
- **Adverbs are your best friends**: they always tell you what is the best tense to choose.
- **Do not translate each word.**

Dott.ssa Chiara Carlini



MULTIPLE MATCHING

SOME TIPS

- **Read the title** to understand the **context**
- If you don't understand a word, **generalize**
- Look for **key words** (you don't need to understand or read everything)
- Look for **synonyms, similar expressions, paraphrasis**
- Focus on **specific info**
- **Don't** read one question at a time and then look for the answer in each text!

Dott.ssa Chiara Carlini



MULTIPLE MATCHING

STRATEGY 1

- **Read all the questions** & identify **important words**
- **Scan** all the texts quickly to get a **general idea**
- Read **text A in detail**
- Read the questions **again** and try to find **2 or 3 questions that fit**
- **Repeat step 3 and 4 for each text**
- If you're stuck between 2 answers, **read the relevant texts again**

STRATEGY 2:

- **Scan** all the texts quickly to get a **general idea**
- Read text A **in detail**
- **Read ALL the questions** and try to find 2 or 3 questions that fit
- **Repeat steps 2 and 3 for each text**
- If you're stuck between 2 answers, **read the relevant texts again**

Dott.ssa Chiara Carlini



MULTIPLE MATCHING

TIME MANAGEMENT:

- ✓ You should complete this task in 15/17 minutes.
- ✓ Every time you practice at home you should time yourself.
- ✓ When you practice **don't** use any dictionaries!
- ✓ Make sure you leave enough time to read each text more than once.

Dott.ssa Chiara Carlini



PRACTICE – MULTIPLE CHOICE

- https://elt.oup.com/student/englishfile/intermediate3/grammar/file01/nef_int_grammar01_a01?cc=it&selLanguage=it (svolgere anche gli altri esercizi della sezione *Grammar*, dal File 1 al File 10)
- https://elt.oup.com/student/englishfile/intermediate3/grammar/file05/nef_int_grammar05_a02?cc=it&selLanguage=it (svolgere anche gli altri esercizi della sezione *Grammar*, dal File 1 al File 10)
- <https://elt.oup.com/student/englishfile/intplus3/grammar/?cc=it&selLanguage=it> (svolgere anche gli altri esercizi della sezione *Grammar*, dal File 1 al File 10)
- https://elt.oup.com/student/englishfile/intermediate3/grammar/file10/nef_int_grammar10_a01?cc=it&selLanguage=it (svolgere anche gli altri esercizi della della sezione *Grammar*, dal File 1 al File 10)

Dott.ssa Chiara Carlini



PRACTICE – OPEN CLOZE

- https://www.english-grammar.at/online_exercises/open-cloze/open-cloze-index.htm (scegliere test di livello *Elementary* e *Intermediate*)
- https://www.examenglish.com/PET/preliminary_reading6.htm
- https://www.flo-joe.co.uk/preliminaryenglish/reading/pet_reading_practise_test_part_6.htm
- <https://www.englishlearner.com/intermediate/use-of-english-open-cloze-path.shtml>
- <https://e-edu.nbu.bg/file.php/11757/en/b1/opencloze-var1.htm>
- http://www.englishdaily626.com/open_cloze.php?002
- <https://onlineeducare.com/practise-sheet-on-cloze-test-without-clues/>
- <http://englishgrammarpower.blogspot.com/2012/03/close-test-with-without-clues-for-hsc.html>

Dott.ssa Chiara Carlini



PRACTICE – MULTIPLE MATCHING

Task con 8 brani (PET):

- https://www.examenglish.com/PET/pet_reading2.htm
- https://www.englishrevealed.co.uk/PET/Reading_Part_2/matching_1.php
- <https://www.englishaula.com/en/cambridge-english-test-exam-preparation/cambridge-english-preliminary-pet-b1/reading/exam-parts/exercise-practice-test/3-5-2-5128928880492544/>

Task con 5 brani (FCE):

- <https://www.flo-joe.co.uk/fce/students/tests/1part3.htm>

Dott.ssa Chiara Carlini





ALMA MATER STUDIORUM
UNIVERSITÀ DI BOLOGNA

CONTATTI

Centro Linguistico di Ateneo - CLA
Staff Tutoraggio Laboratori Linguistici

Via Filippo Re, 10 – 40124 Bologna

<http://www.cla.unibo.it/>

Autoapprendimento assistito da Tutor:

<http://www.cla.unibo.it/corsi/moduli-preparazione-prova-idoneita/bologna>

email: cla.bo-tutoraggio@unibo.it

STRUTTURA PROVA INGLESE B2

Prevede **una parte di *Use of English*** e **una parte di comprensione del testo (*Reading comprehension*)**. **NON** è prevista la comprensione orale (*listening*).

1. La **sezione di *Use of English*** consiste in:

- **10 item grammaticali** a **scelta multipla** con 4 opzioni
- **6 item lessicali** a **scelta multipla** con 4 opzioni contestualizzati in **3 brevi brani**
- **1 esercizio di *open cloze*** con **8 item grammaticali** contestualizzati in un brano

2. La sezione di ***Reading comprehension*** consiste in:

- **1 esercizio di *multiple matching*** composto da **un brano di 4 paragrafi o 4 brani brevi** con **10 domande**

La prova si intende superata con il 60% di risposte corrette!

Tempo di svolgimento: 40 minuti

N.B. Non si può tornare indietro!

<http://www.cla.unibo.it/idoneita-linguistica/struttura-e-modalita-delle-prove-di-idoneita/idoneita-inglese>

Dott.ssa Giulia Messeri



B2 | USE OF ENGLISH | 1 PARTE

10 item

grammaticali

(frasi / mini dialoghi)

a scelta multipla

A: Will isn't answering my calls. He _____ turned off his mobile.

B: He's always doing that. It's so annoying!

Select one:

- a. must have
- b. can't be
- c. mustn't have
- d. could be

Dott.ssa Giulia Messeri



B2 | USE OF ENGLISH | MULTIPLE CHOICE CLOZE - GRAMMAR

ABILITIES TESTED

Identifying grammatical structures

SOME USEFUL STRATEGIES & TIPS

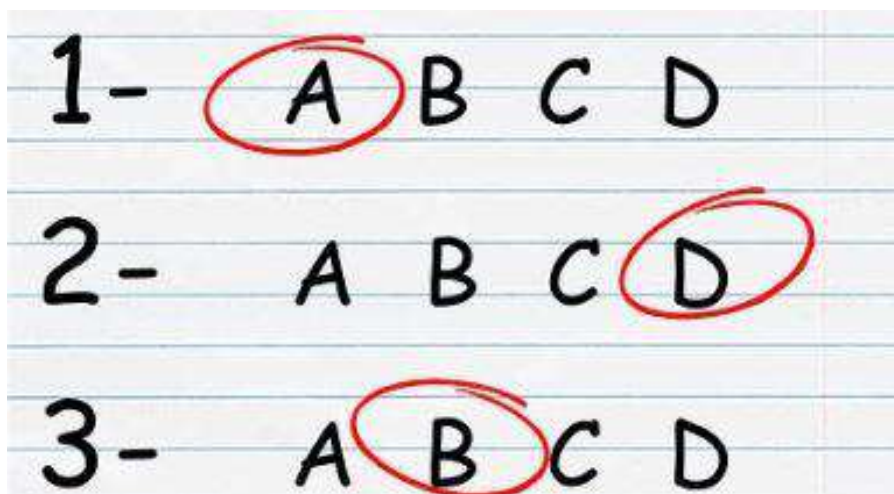
- **Look at the words before and after the gap:** e.g. *plural/singular nouns, adverbs, prepositions, commas, etc.*
- **Identify the tenses:** are you in the **past, present** or **future**?
- **"Adverbs are your best friends":** they can tell you what tense you are in.

Dott.ssa Giulia Messeri



B2 | USE OF ENGLISH | MULTIPLE CHOICE CLOZE - GRAMMAR

- Try to first **eliminate the options which are obviously incorrect**.
- Then try to **concentrate on the remaining options** to see which one is **grammatically correct**.



Dott.ssa Giulia Messeri



B2 | USE OF ENGLISH | 2 PARTE

**6 item lessicali
a scelta multipla
contestualizzati
in 3 brani brevi
(4 opzioni)**

Choose the correct answer for each gap to complete the text.

Agriculture dominates Tanzania's economy,



46% of Gross Domestic

Product (GDP). The country's economic growth relies heavily, therefore, on the performance of this sector, with improvements there having a direct impact on the wealth of the nation in

general and the



of the poor in

particular.

Dott.ssa Giulia Messeri



B2 | USE OF ENGLISH | MULTIPLE CHOICE CLOZE - VOCABULARY

ABILITIES TESTED

Identifying collocations!

A collocation is a **group of words** (set expressions) that go together in a **specific context**.

SOME USEFUL STRATEGIES & TIPS

- **Look at the words before and after the gap:** e.g. *articles, prepositions, verbs, etc.*
- Try to first **eliminate the options which are obviously incorrect.**
- Then try to **concentrate on the remaining options** to see which one is **correct** according to the given **context**.

TIME MANAGEMENT: you should complete parts 1 and 2 (multiple choice cloze) in max. 10 minutes.

Dott.ssa Giulia Messeri



B2 | USE OF ENGLISH | MULTIPLE CHOICE CLOZE - VOCABULARY

EXAMPLE

"They couldn't _____ a decision and agreed to meet again the next day."

- A) arrive
- B) achieve
- C) reach
- D) attain

Correct answer: C – to reach a decision

Remember!

A- to arrive AT a decision

B- to achieve: raggiungere, realizzare, conseguire, e.g. "to achieve a goal".

D- to attain, synonym of "to achieve", e.g. "to attain independence / the highest grade"

Dott.ssa Giulia Messeri



B2 | USE OF ENGLISH | 3 PARTE

1 esercizio di *open cloze* con 8 item *grammaticali* contestualizzati in un brano (no *opzioni*)

Dott.ssa Giulia Messeri

Write ONE word in each gap to complete the text.

Climate-smart agriculture

Agriculture produces 25% of global greenhouse gas emissions, making it a major contributor to the climate problem. At the same time, to meet the requirements of a growing population, it

_____ currently estimated that food production will need to increase by 70% globally and by 100% in developing countries over the next 30 years.

In addition, farmers not _____ contribute to climate change, they also suffer from it, especially those in poorer areas who don't have the means to survive

_____ an extreme or unusual weather event destroys their crops.

Climate-smart agriculture (CSA) could be the solution. CSA projects set

_____ to achieve a triple win: manage land sustainably, increase productivity and protect producers from the negative effects

solutions _____ complement the existing farming system and landscape.

One such project in East Africa ensures small-scale rice-farmers have reliable access to water

_____ providing government funding for irrigation schemes. So far, the project has directly benefited 228,000 farmers, 25% of

_____ are women.

CSA projects like this one are working to improve food security, reduce rural poverty and enhance environmental sustainability in the region.



B2 | USE OF ENGLISH | OPEN CLOZE

ABILITIES TESTED

Testing active vocabulary

1. Identifying the word which is **grammatically correct** in the given **context**.
2. Writing the word correctly according to **spelling**.

Remember: write only ONE word in each gap!

SOME USEFUL STRATEGIES & TIPS

1. Read the whole sentence until the full stop or the comma to understand its meaning.
2. **Don't stop reading when you first see the gap!**
3. Identify the type of word needed: is it an article, a noun, a verb, an adverb, an adjective, a comparative/superlative form, a preposition, or a linking word?
 4. Identify the word to be written.
 5. Remember how the word is written according to spelling, and write it in the gap.
6. Read the whole text one more time to make sure that the words makes sense in the sentences and the spelling is correct.
 7. **Make sure there are no typos!**

Time management: you should complete this task in ca. 5/10 minutes.



B2 | READING COMPREHENSION | 1 esercizio di multiple matching composto da un brano di 4 paragrafi O 4 brani brevi con 10 domande

Domande 15
Risposta non ancora data
Punteggio max. 1000
Contrassegna domanda

You are going to read 4 short reviews of Art Exhibitions. Answer the questions by choosing which review (A, B, C or D) contains the information requested.

N.B. The reviews may be chosen several times.

Art Exhibitions

A

This magnificent exhibition of the works of 17th-century genius Artemisia Gentileschi is a glorious demonstration of just what a powerful weapon the paintbrush can be. A victim of male violence who was denied justice by the law, Artemisia used biblical stories to show women taking back control in the most extreme ways imaginable. The dynamic energy of her pictures gives them a very modern, almost cinematographic, feel and the violence they often illustrate is mapped with scientific precision. Justly celebrated in her own lifetime but then forgotten, she was rediscovered in the mid 20th century along with her near-contemporary Caravaggio, whose piercing realism influenced hers. But while Caravaggio's work instantly caught on, Artemisia's still struggled for recognition. Until now. By finally bringing together important paintings from galleries and collections around the globe, this exhibition restores her to her rightful place as one of the greats.

B

Featuring over 500 objects from director Stanley Kubrick's groundbreaking films, this exhibition has something for everyone, from model spaceships to weird erotic furniture. Kubrick was an artist who insisted on supervising every aspect of a production personally, from costume design to publicity posters, and drove his co-workers mad. The depth of his research was legendary - the military planes in *Dr Strangelove* were reproduced so accurately that he was threatened with an FBI investigation to find out where he got his information from. Combined with a keen interest in cutting-edge design and technology, this enabled him to construct visions of the future from objects that were unusual but available at the time and so make the images of outer space in *2001: A Space Odyssey* or the interiors of *A Clockwork Orange* seem convincingly realistic. Many of these objects are on display here for all to enjoy.

C

Among the many wonders to be seen at the Science Museum, art probably wouldn't be top of anybody's list. But it has been part of the museum's collection from the beginning, as this marvellous exhibition on the Art of Innovation demonstrates. A dramatic painting of a steel works lighting up the night sky by de Loutherbourg, better-known for his set designs for the London stage, was an early purchase. Another highlight of the show is a huge painting by James Nasmyth of the face of the Moon, on public display for the first time since the Great Exhibition in 1851. Along with Nasmyth's groundbreaking drawings and models that meticulously recreate the lunar surface, this image changed how scientists viewed the Moon and his book of photographs on the subject is one of the classics of astronomy. This exhibition is a must-see for anyone interested in science or art.

D

After a gap of twenty years, another major exhibition celebrates the strange universe of William Blake (1757-1827). 300 images, most of them no bigger than the average book cover, crowded with wild visions of gods and monsters and weird things apparently happening under the sea or in outer space, but actually in the land of the artist's imagination. Blake lived his whole life in London but you would never guess that from his art. His contemporaries didn't get it and certainly didn't buy it - at the only exhibition in his lifetime not a single work was sold and the critics concluded he must be mad. Having dragged myself round this enormous exhibition, I have to say that they might have had a point.

Which review mentions an artist who...

took attention to detail to extremes?

A

was inspired by a traumatic personal experience?

B

was not appreciated in his or her lifetime?

C

could be difficult to work with?

D

also worked for the theatre?

A

created images that were not at all realistic?

B

almost got into trouble with the authorities?

C

also published a book that was very influential?

D

the reviewer feels was ignored for too long?

A

the reviewer does not entirely like?

B

NAVIGAZIONE QUIZ

1	2	3	4	5	6
7	8	9	10	11	12
13	14	15			

Termina il tentativo...

Tempo rimasto 0:28:04

Dott.ssa Giulia Messeri

B2 | READING COMPREHENSION

ABILITIES TESTED

Reading for:

- **Specific information**
 - **Detail**
- **Understanding opinions**

Dott.ssa Giulia Messeri



B2 | READING COMPREHENSION | READING STRATEGIES & TIPS (1)

- 1) Read the title to understand the context.
- 2) Read the questions first and try to understand their meaning. Pay attention to:
 - ✓ Frequency adverbs (always, never, etc.)
 - ✓ Modal verbs
 - ✓ Verb tenses (present, past, future)
 - ✓ Conditional forms
 - ✓ Active and passive voice
- 3) Read the FIRST text once and try to make a mental summary of the content.
- 4) Read questions 1-10 and find out which ones match the FIRST text.
Choose an answer. **Note: more than one answer is possible for each text.**
- 5) Repeat this process with the remaining 3 texts.
- 6) Read each text a second time to look for more detailed information.
- 7) Check the answers and make changes if necessary.

Dott.ssa Giulia Messeri



B2 | READING COMPREHENSION | READING STRATEGIES & TIPS (2)

DON'T read one question at a time and then look for the answer in each text!

DO'S:

- ✓ **Look for synonyms, similar expressions, paraphrasing**

If you find a key word in both a question and the text, don't assume that you have found the correct answer.

- ✓ **Focus on specific information**

TIME MANAGEMENT:

- ✓ You should complete this task in max. 20 minutes.
- ✓ Every time you practice at home you should time yourself.
- ✓ When you practice **don't** use any dictionaries!
- ✓ Make sure you leave enough time to read each text more than once.



Dott.ssa Giulia Messeri



Use of English & Reading | Practice

PROVA DI IDONEITÀ DIMOSTRATIVA:

- <https://e-cla.unibo.it/course/view.php?id=9542>

Accedere con le proprie credenziali di ateneo

1) USE OF ENGLISH

1.1) MULTIPLE CHOICE CLOZE

- <https://elt.oup.com/student/englishfile/intplus3/grammar/?cc=it&sellanguage=it>

Svolgere tutti gli esercizi, dal File 1 al File 10 (Intermediate plus – B1+)

- <https://elt.oup.com/student/englishfile/upperint3/grammar/?cc=it&sellanguage=it>

Svolgere tutti gli esercizi, dal File 1 al File 10 (Upper-intermediate – B2)

- https://www.english-grammar.at/online_exercises/vocabulary-multiple-choice-cloze/vocabulary-mc-index.htm

Scegliere test di livello “Intermediate” e “Advanced”

Dott.ssa Giulia Messeri



Use of English & Reading | Practice

1) USE OF ENGLISH

1.2) OPEN CLOZE

- https://www.english-grammar.at/online_exercises/open-cloze/open-cloze-index.htm

Scegliere test di livello “**Intermediate**” e “**Advanced**”

B1 (PET):

- https://www.flo-joe.co.uk/preliminaryenglish/reading/pet_reading_practise_test_part_6.htm
- https://www.examenglish.com/PET/preliminary_reading6.htm

Dott.ssa Giulia Messeri



Use of English & Reading | Practice

1) USE OF ENGLISH

1.2) OPEN CLOZE

B2 (FIRST):

- <https://www.flo-joe.co.uk/fce/students/tests/FCE-Part-2-Open-Cloze.htm>
- https://www.flo-joe.co.uk/fce/students/tests/2_oclts3.htm
- <https://www.flo-joe.co.uk/fce/students/tests/oclts2.htm>
- <https://www.flo-joe.co.uk/fce/students/tests/oclts1.htm>

Dott.ssa Giulia Messeri



Use of English & Reading | Practice

2) READING: MULTIPLE MATCHING

B1 (PET):

- https://www.flo-joe.co.uk/preliminaryenglish/reading/pet_reading_practise_test_part_2.htm
- https://www.examenglish.com/PET/pet_reading2.htm

B2 (FIRST):

Task con 3 brani:

- <https://www.esl-lounge.com/student/first-certificate/fce085-reading-three-magicians-multiple-matching.php>
- <https://www.esl-lounge.com/student/first-certificate/fce086-reading-three-south-american-leaders-multiple-matching.php>
- <https://www.esl-lounge.com/student/first-certificate/fce087-reading-three-wild-cats-multiple-matching.php>

Dott.ssa Giulia Messeri



Use of English & Reading | Practice

B2 (FIRST):

Task con 4 brani:

- <https://www.flo-joe.co.uk/fce/students/tests/FCE-Part-7-Multiple-Matching-Practice-Test.htm>
- <https://www.flo-joe.co.uk/fce/students/tests/2part3.htm>
- <https://www.flo-joe.co.uk/fce/students/tests/part4.htm>
- <https://www.esl-lounge.com/student/first-certificate/fce-111-reading-multiple-matching-four-sports.php>
- <https://www.esl-lounge.com/student/first-certificate/fce-112-reading-multiple-matching-four-hotel-reviews.php>
- <https://www.esl-lounge.com/student/first-certificate/fce-113-reading-multiple-matching-four-letters-to-neighbours.php>
- <https://www.esl-lounge.com/student/first-certificate/fce-114-reading-multiple-matching-four-properties.php>

Dott.ssa Giulia Messeri



Use of English & Reading | Practice

B2 (FIRST):

Task con 5 brani:

<https://www.flo-joe.co.uk/fce/students/tests/1part3.htm>

Dott.ssa Giulia Messeri





ALMA MATER STUDIORUM
UNIVERSITÀ DI BOLOGNA

CONTATTI

Centro Linguistico di Ateneo - CLA
Staff Tutoraggio Laboratori Linguistici

Via Filippo Re, 10 – 40124 Bologna

<http://www.cla.unibo.it/>

Autoapprendimento assistito da Tutor:

<http://www.cla.unibo.it/corsi/moduli-preparazione-prova-idoneita/bologna>

email: cla.bo-tutoraggio@unibo.it



ALMA MATER STUDIORUM
UNIVERSITÀ DI BOLOGNA

GRAZIE PER L'ATTENZIONE!



www.unibo.it