



ALMA MATER STUDIORUM
UNIVERSITÀ DI BOLOGNA

Interdepartmental PhD Programme: **EIT4SEMM**

Luca De Marchi

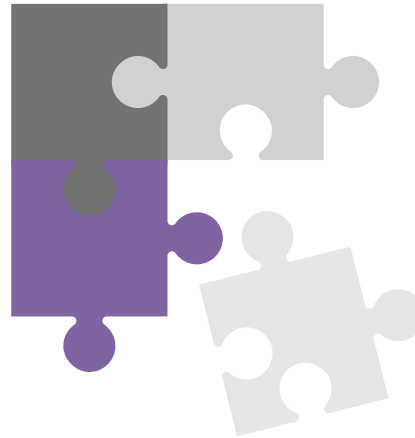
PHD PROGRAMME

ENGINEERING AND INFORMATION TECHNOLOGY FOR STRUCTURAL AND ENVIRONMENTAL MONITORING AND RISK MANAGEMENT - EIT4SEMM

PhD students (currently 42) gain specific expertise in models, algorithms, components, architectures and operating principles of the sensing technologies and build up a unique background in infrastructures and environment management

*Dept. of Civil, Chemical, Environmental and
Materials Engineering - DICAM*

*Dept. of Computer Science and
Engineering- DISI*



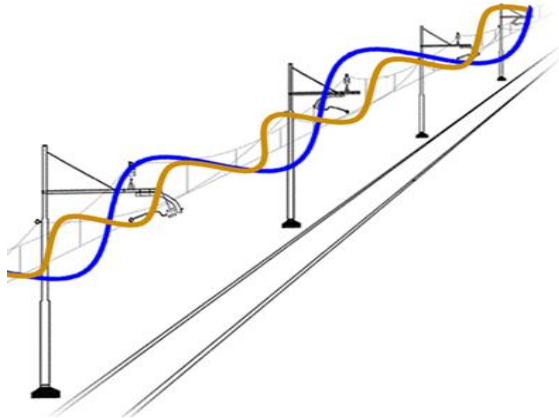
*Dept. of Electrical, Electronic and
Information Engineering - DEI*

Dept. of Mathematics



PhD Students' activities (I)

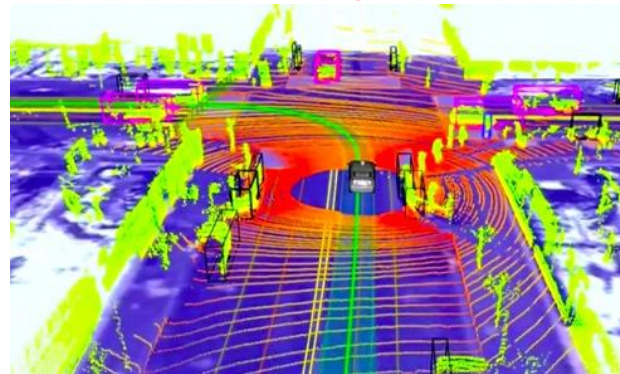
Railways monitoring



Characterisation of NaTech accidents



Sensors/ Computer Vision



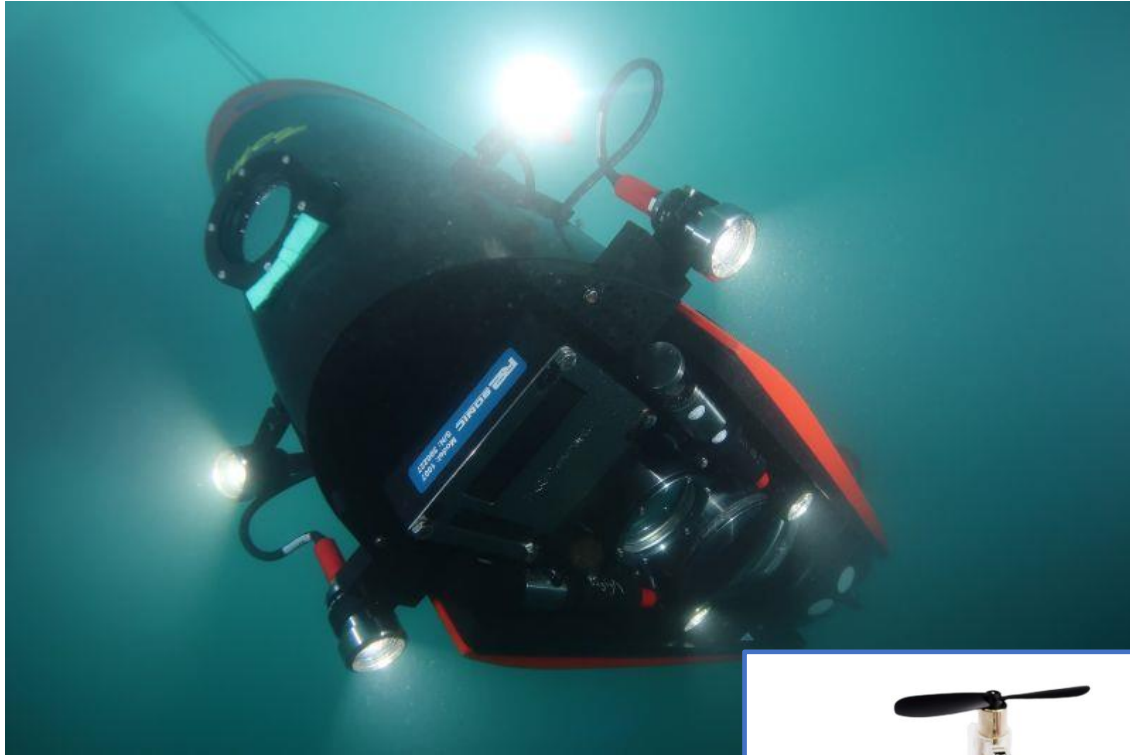
Pressure vessels monitoring



Bridge monitoring



PhD Students' activities (II)



Biodiversity Monitoring



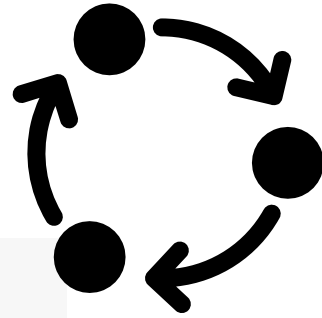
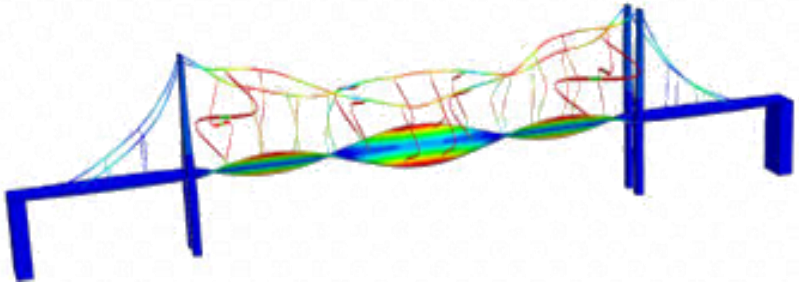
Remote sensing

Assessing Climate Change impacts

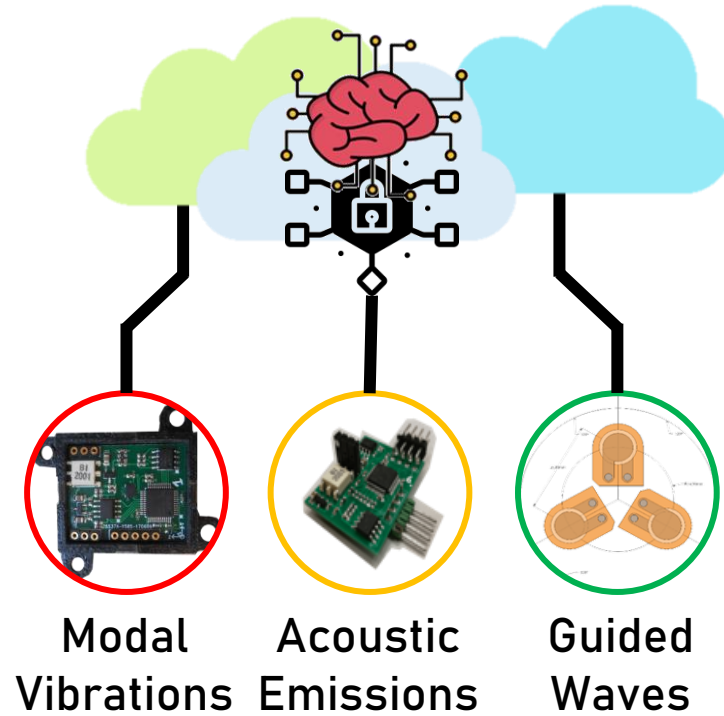


Precision agriculture

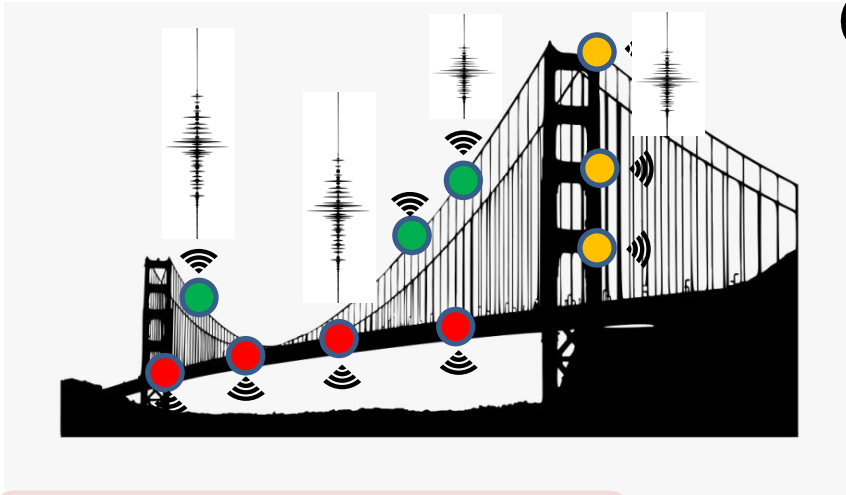
Modelling



Data Analytics



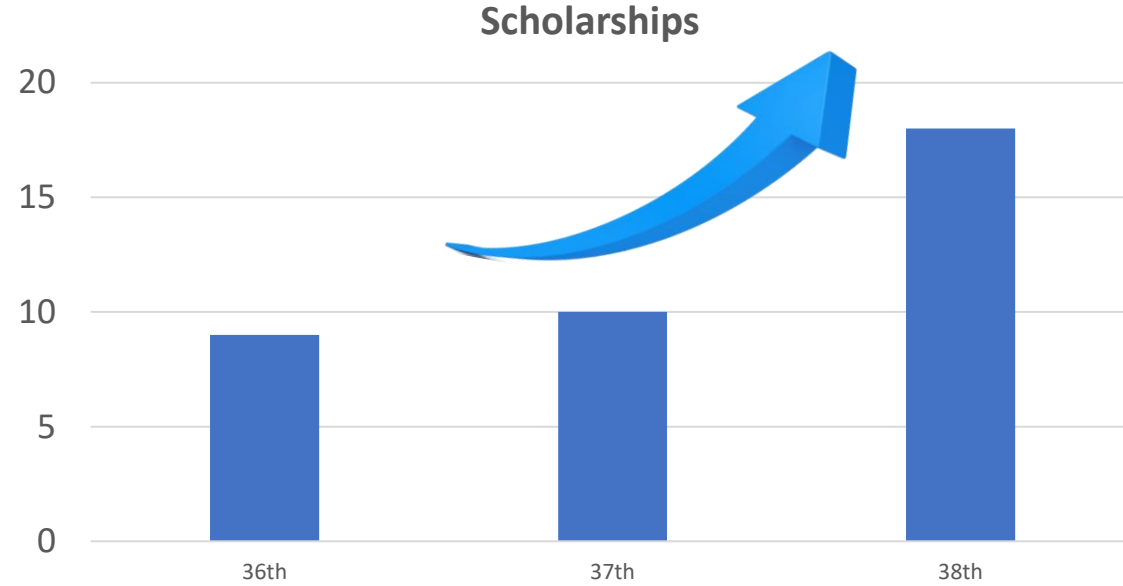
Sensor Network Design



Data Management



Growing numbers



European Projects



INSPIRE

Industrial Doctorates



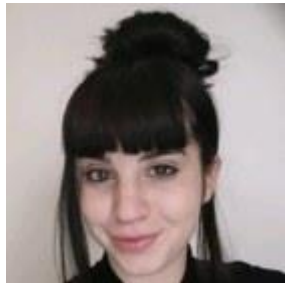
Modalità di collaborazione in tema di dottorato

Enti e imprese possono collaborare con l'Università nell'ambito del dottorato secondo diverse modalità:

- Finanziamento di borse di dottorato all'interno di un corso già attivo
- Posizioni di dottorato executive (riservate al personale dipendente)
- **Dottorati innovativi per le Imprese co-finanziati dal PNRR**



Meet the new PhD students!



- V. Laghi: "For Women in Science 2022", "Best Research Pitch Presentation"



- M.Nerone, I. Valic, M. Zauli, "IEEE Metrology for Automotive"
- F. Zonzini, ABB-IEEE Award for best PhD thesis





ALMA MATER STUDIORUM
UNIVERSITÀ DI BOLOGNA

Luca De Marchi

Advanced Research Center on Electronic Systems

l.demarchi@unibo.it

www.unibo.it