



ALMA MATER STUDIORUM
UNIVERSITÀ DI BOLOGNA

ALMA-AI Co-innovation Lab

*An open playground for nurturing shared
innovation in the field of applied AI*

Luciano Bononi

ALMA-AI Interdepartmental Institute on Human-Centered AI

My travel itinerary with ARCES (just one celebrative slide)



- **People (Friends)**

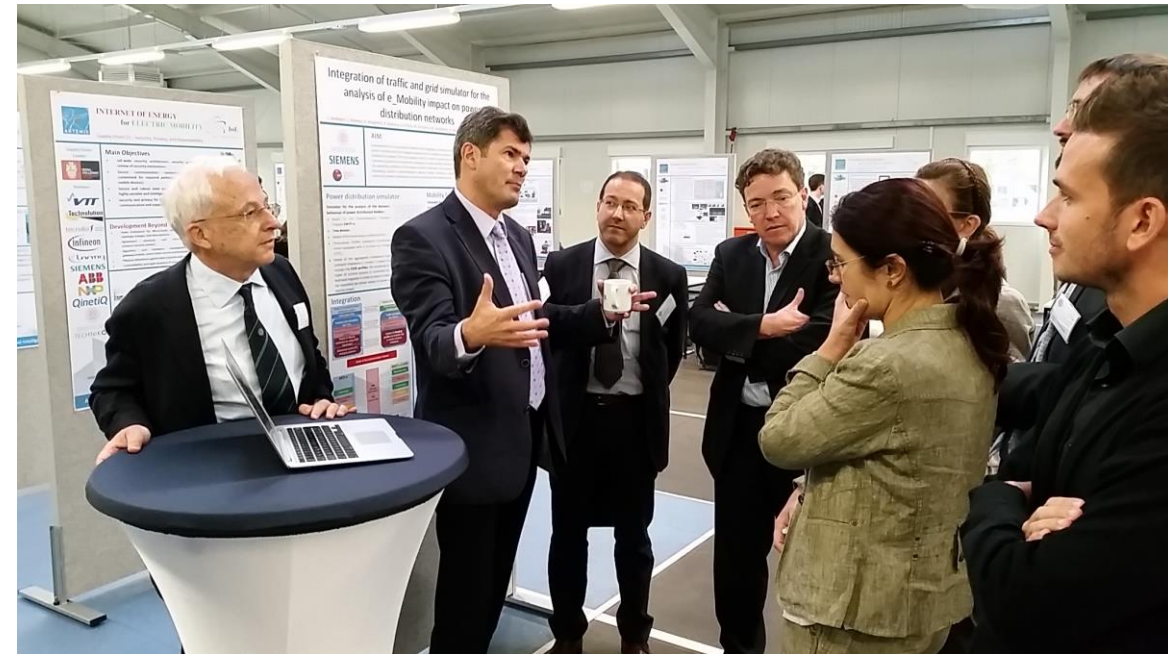
- open collaboration (before unifying DISI)
- sense of community
- sharing of principles

- **Work**

- chasing projects
- working hard, sharing merits
- amazing results

- **Experience**

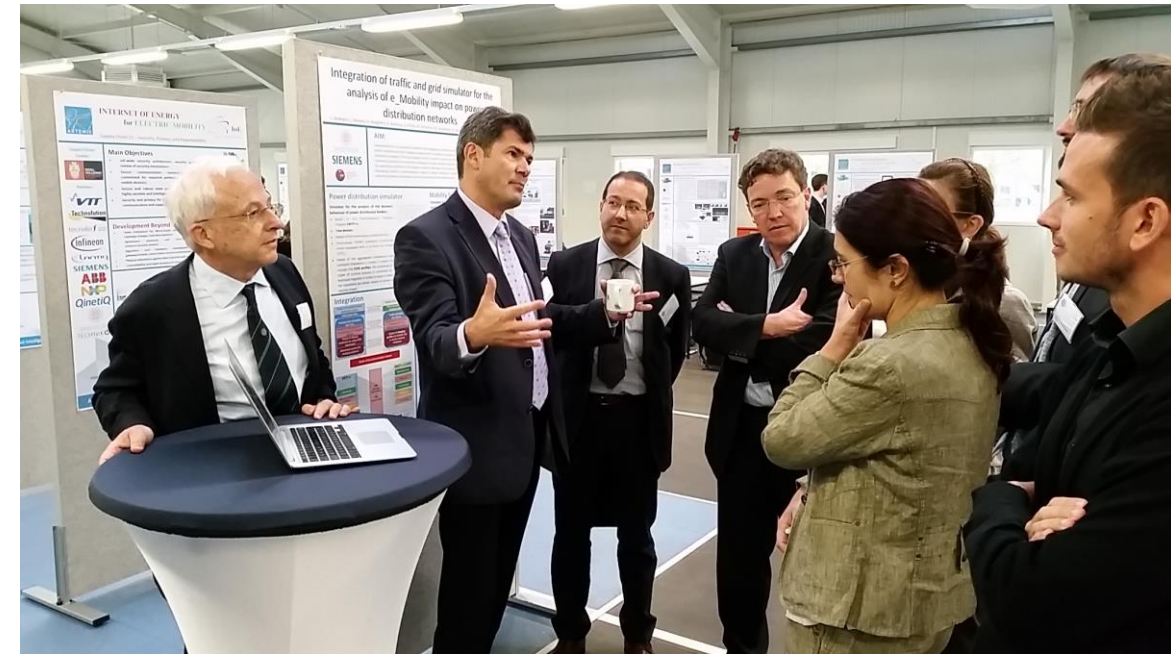
- maturing competence
- growing experience
- co-developing know-how with industry



My travel itinerary with ARCES (just one celebrative slide)



- **People (Friends)**
 - open collaboration (before unifying DISI)
 - sense of community
 - sharing of principles
- **Work**
 - chasing projects
 - working hard, sharing merits
 - amazing results
- **Experience**
 - maturing competence
 - growing experience
 - co-developing know-how with industry

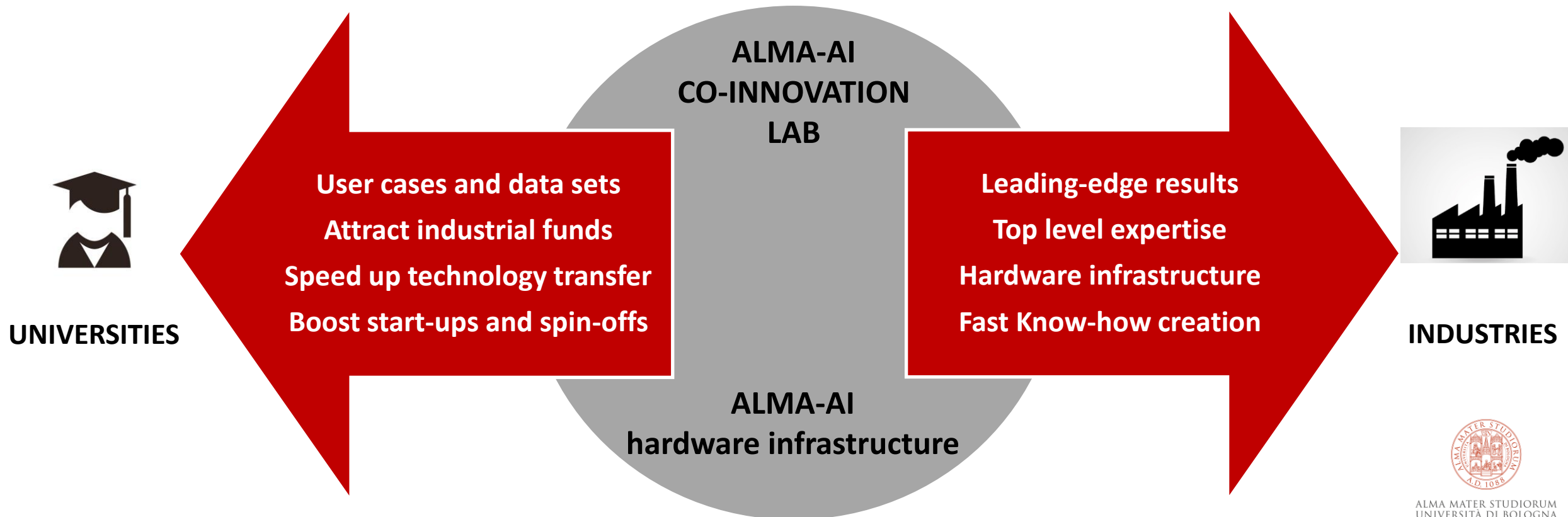


Great FUN!!!



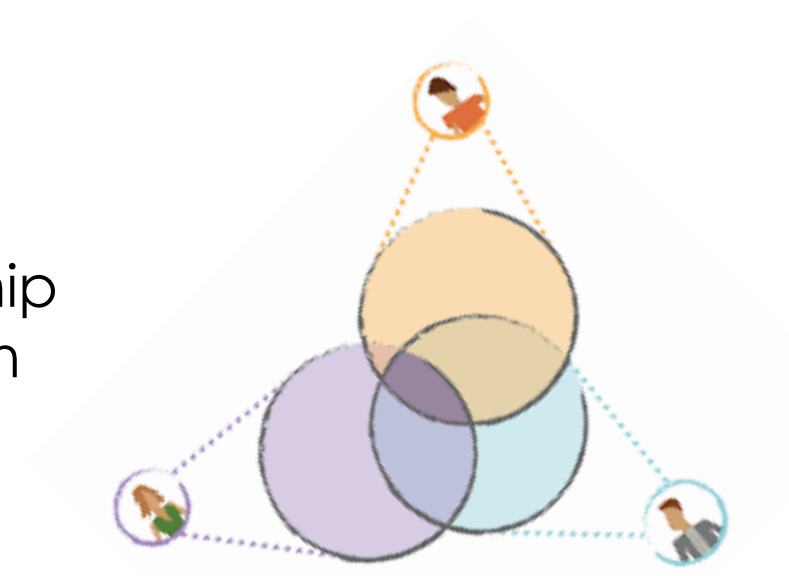
Co-Innovation Lab Goal – Fostering higher innovation pace

- **AI is growing** at a pace that cannot be sustained by traditional means and resources by neither industry/SME nor academia.
- Bologna offers the **perfect opportunity**: HPC, CCloud, Data, AI, Know-How...
- New processes needed to **foster industrial innovation** while keeping academia on the edge of world-wide research.



Method: Co-Innovation Lab @ ALMA-AI

- **Co-design:** the traditional designer-client relationship that has largely characterised the relation between universities and industries till now is no longer effective, efficient and not scalable. It needs to be replaced by **streams of continuous interaction in a shared design space**.
- **Co-working:** personal networking needs to become the core of novel cooperation models, **crossing the borders** of industry and academia.
- **Co-development:** development activities need to be shared so as to build **creative** working environments and stimulating **out-of-the-box solutions**

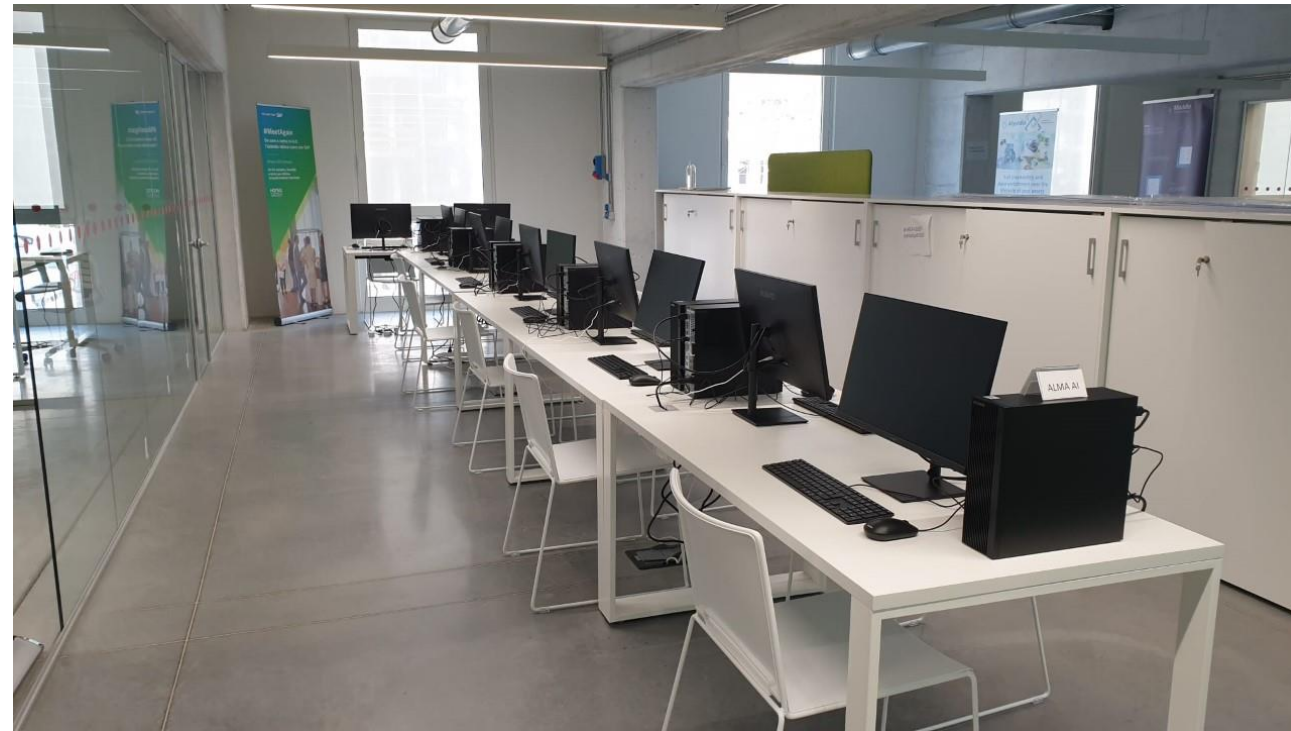
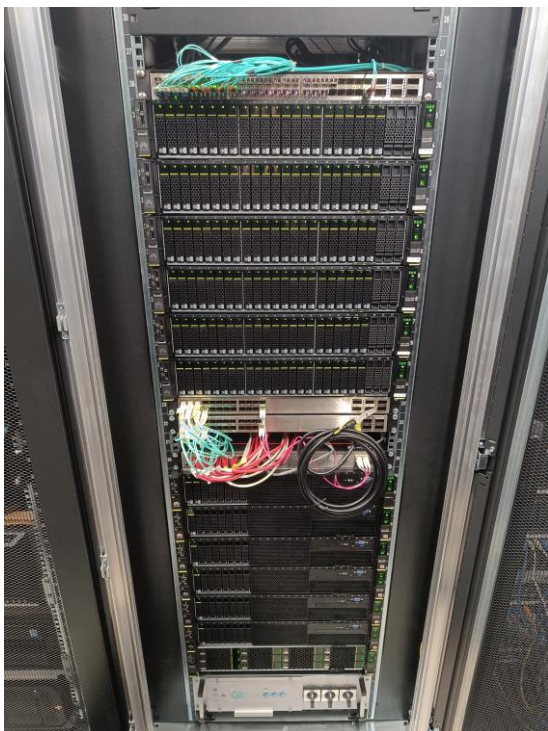


Implementation: ALMA-AI Co-Innovation Lab sites

CESENA DATA CENTER

BI-REX

ALMA-AI headquarter
(Work in Progress)



Today:

Ramp-up phase

Tomorrow:

Consolidation phase



Governance

Board of directors

- Prof. Andrea Acquaviva (DEI - BO)
- Prof. Luciano Bononi (DISI – BO)
- Prof. Stefano Diciotti (DEI - CE)
- Prof. Vittorio Maniezzo (DISI – CE)
- Prof. Andrea Omicini (DISI – CE)
- Prof. Marco Patella (DISI – BO)

We will put together an **Industrial Advisory Board**
(suggest research and innovation directions)





ALMA MATER STUDIORUM
UNIVERSITÀ DI BOLOGNA

email for contacts:

AlmaAI.ColInnovationLab@unibo.it

ALMA-AI Interdepartmental Institute on Human-Centered AI

HW infrastructure in Cesena for research and innovation

Hardware Type	Specs
1 Compute Server (OceanStor 5300)	2U (128GB Cache), 96GB RAM 3 Atlas 800 (DNNs Training NPUs) 6 Atlas 300 (DNNs Inference NPUs) 244TB HDD Storage + 31TB SSD Storage

Hardware Type	Specs
1 Compute Server Intel-based	2x Intel Xeon 16-core 12x 16GB RAM, 1x 2TB SSD 1 Atlas 800 (DNNs Training NPUs) 2 Nvidia Tesla V100 (DNNs Training GPUs) 5 Atlas 800 (DNNs Inference NPUs)
1 Storage server (Arm server)	256GB RAM, 10TB HDD Storage
20 Client machines	B15 Mate Station

Hardware Type	Specs
1 Compute Server AMD-Based	2 CPU AMD EPYC 7282 16-Core Processor, 512 RAM 2 Nvidia Tesla V100 (DNNs Training GPUs)